



Summary of Findings of the Independent Verification Group Specific to the Great Western Tiers

LG June 2012

Brief summary:

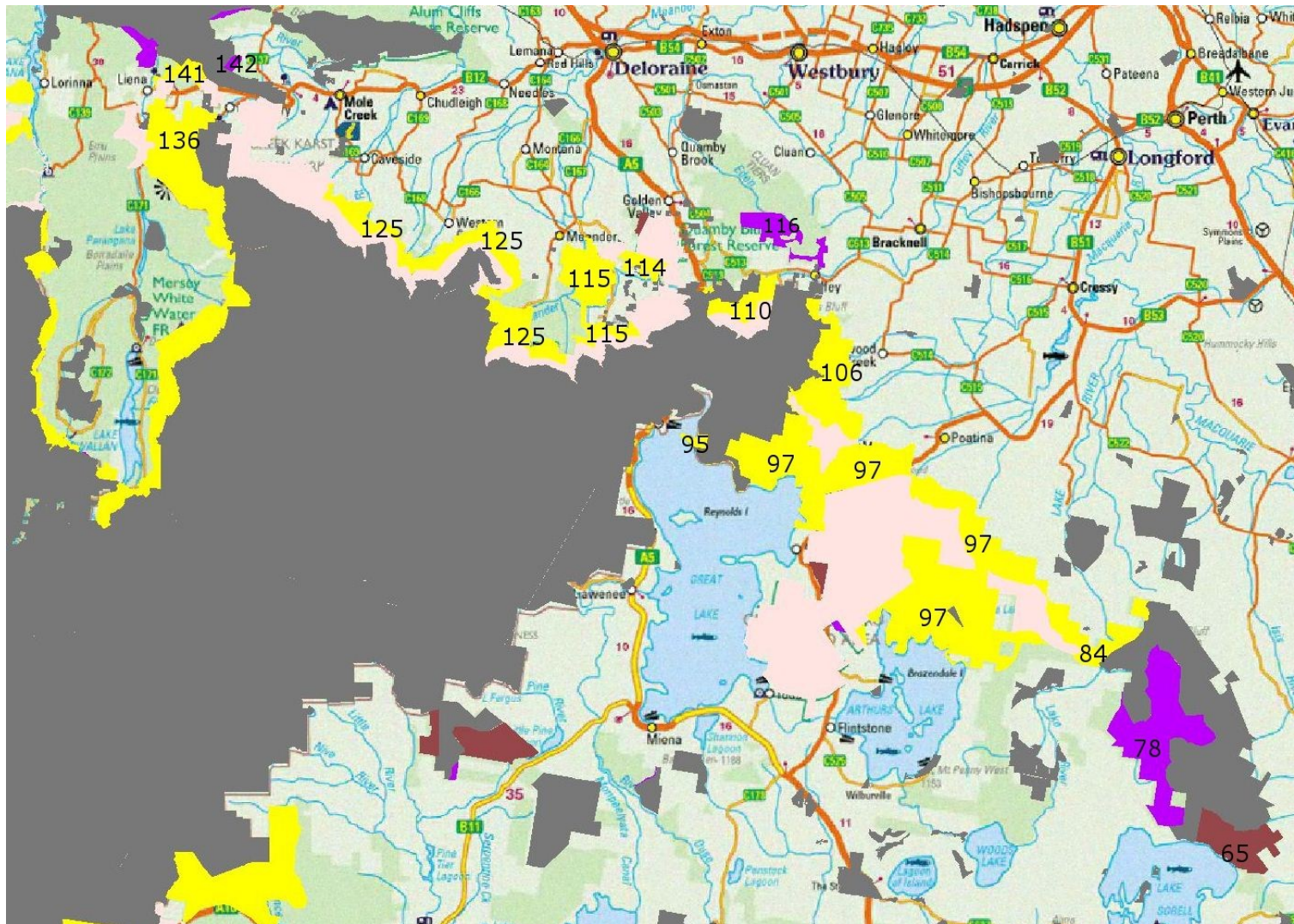
The majority of the GWT, including the Mole Creek Karst, is assessed as being of World Heritage value — a complex of geological, geomorphological, biological, scenic, cultural heritage values—to be potentially a very important addition to the existing Tasmanian Wilderness World Heritage — to add to the integrity of the existing Tasmanian Wilderness World Heritage Area.

Stand-out values include:

World Heritage; National Heritage; visual beauty; social value; habitat and habitat connectivity for carnivorous marsupials and other priority fauna; karst (cave) systems, freshwater ecosystems; oldgrowth forest; biological productivity; Grey Goshawk habitat; ancient fauna refugia; rare, endangered and vulnerable forest types; eucalypt diversity; biodiversity assets; habitat for priority flora species.

The following figure is extracted from the maps published by the IVG (http://environment.gov.au/land/forests/independent-verification/pubs/ivg_conservation_5a_heritage_map_i.jpg). The yellow areas are recommended for addition to the Tasmanian Wilderness

World Heritage Area. Most of our nominated area for reservation is in yellow. Areas in grey and pink are already reserved. The large numbers on the map indicate the “polygon” number, as listed in the following tables. Specific values are detailed in the tables.



Polygon number	Area Description	IVG Report Recommendation
65	Great Western Tiers around Mt Franklin	<p>Significant concentration of vascular plant species that are relatively poorly represented within reserves.</p> <p>Paleo-endemic^a Flora, refugia - <i>Eucalyptus amygdalina</i> forest and woodland on sandstone (Vulnerable) - Highland grassy sedgeland (Rare).</p> <p>10-20% of forest is RFA oldgrowth^b.</p> <p>High (on scale high, medium, low) importance for improving the reservation status and connectivity for all three marsupial carnivore species.</p> <p>20-40%? relative contribution to reserving high and very high value freshwater ecosystems.</p> <p>Very low impediments to effective reserve management.</p>
78	Great Western Tiers between Millers Bluff and Mt Franklin	<p>Significant concentration of vascular plant species that are relatively poorly represented within reserves.</p> <p>Paleoendemic Flora, refugia - Highland grassy sedgeland (rare).</p> <p>Mid-range rating (high) for relative contribution of proposed reserve to improving the reservation status of known habitat for priority flora species.</p> <p>Eucalypt diversity - important occurrences of Eucalypt species, improve the reservation of Eucalypt species Eucalypt diversity, some notable values with conservation gain through reservation</p> <p>Flora conservation - <i>Acacia axillaris</i></p> <p>20-40% of forest is RFA oldgrowth.</p> <p>80-100% relative contribution to reserving high and very high value freshwater ecosystems.</p> <p>Medium (on scale high, medium, low) importance for improving the reservation status</p>

Polygon number	Area Description	IVG Report Recommendation
		<p>and connectivity for all three marsupial carnivore species.</p> <p>No particular heritage values, needs further investigation, 3 cultural sites.</p> <p>Very low impediments to effective reserve management.</p>
83	Great Western Tiers, small parcel between Poatina Hwy and Arthurs Lake	not assessed?
84	Great Western Tiers, NW of Millers Bluff, MacLanachan Sugarloaf	<p>84+part 97 (part of 97 on escarpment east of Poatina Rd) more than 5 cultural sites</p> <p><i>Eucalyptus amygdalina</i> on Cainozoic</p> <p>karst under Threshermans Hill</p> <p>would improve GWTC boundary</p> <p>Very high impediments to effective reserve management.</p>
86	Great Western Tiers, small parcel between Poatina Hwy and Arthurs Lake	not assessed?
95	Great Western Tiers, small parcel on Great Lake	Ancient fauna refugia - A 1 km buffer around the Great Lake and Arthurs Lake hotspots intersects areas 95 & 97 (endemic genera of phreatoicids, Paranaspides, Tasniphargus)
97	Great Western Tiers Mother Lords Plains on plateau north of Great Lake + escarpment either side of	<p>Plateau Section–Great Lake—contains areas of highland grassy sedgeland (MGH), more than 15 cultural sites, improves TWWHA boundary, logical addition to TWWHA.</p> <p>Plateau Section–Arthurs Lake—contains areas of subalpine <i>Diplarrena latifolia</i> rushland (MDS). Contains areas of MGH. More than 30 cultural sites, extension of plateau habitat.</p> <p>Eucalypt forest on escarpment contributes to regional-scale connectivity right along</p>

Polygon number	Area Description	IVG Report Recommendation
	<p>Poatina Rd+</p> <p>plateau north of Arthurs lake + escarpment from Poatina Rd to Millers Bluff</p>	<p>the GWT escarpment.</p> <p>Significant concentration of vascular plant species that are relatively poorly represented within reserves.</p> <p>Paleoendemic Flora, refugia - highly ranked but moderately well reserved clade, <i>Gunnera</i>.</p> <p>Mid-range rating (high) for relative contribution of proposed reserve to improving the reservation status of known habitat for priority flora species.</p> <p>Flora conservation - <i>Agrostis diemenica</i>, <i>Hovea tasmanica</i>, <i>Acacia siculiformis</i>, <i>Baumea gunnii</i>, <i>Stellaria multiflora</i></p> <p>20-40% of forest is RFA oldgrowth.</p> <p>High ranking (scale high, medium, low) as a reserve to improve the formal reservation of priority threatened fauna species – contribution to known and core fauna ranges (excluding swift parrot) - significant on a statewide basis</p> <p>Medium relative contribution to reservation of Grey Goshawk habitat.(scale: high, medium, low, very low, nil)</p> <p>Ancient fauna refugia - A 1 km buffer around the Great Lake and Arthurs Lake hotspots intersects areas 95 & 97 (endemic genera of <i>phreatoicids</i>, <i>Paranaspides</i>, <i>Tasniphargus</i>).</p> <p>Listed with 5 other areas in the State as very important for fauna. – has 4 species of priority isopods, 4 species of fish, and 3 species of hydrobiid snails.</p> <p>40-60+?% relative contribution to reserving high and very high value freshwater ecosystems</p> <p>Medium impediments to effective reserve management.</p>

Polygon number	Area Description	IVG Report Recommendation
106	Great Western Tiers, Blackwood Creek/Westons Rivulet area to Poatina Rd	<p>Good addition to TWWHA, boundary appropriate.</p> <p>40-60% of forest is RFA oldgrowth.</p> <p>40-60+%? relative contribution to reserving high and very high value freshwater ecosystems</p> <p>High social value, small areas of medium social value.</p> <p>Very low impediments to effective reserve management.</p>
108	Great Western Tiers, small parcel near Liffey FR	would contribute to integrity of TWWHA (catchment protection)
109	Great Western Tiers, small parcel near Liffey FR	possible benefit to integrity of TWWHA
110	Great Western Tiers, Liffey Sth of river	<p>At least national significance, would contribute to the integrity of the TWWHA in conjunction with the adjoining GWTCa, important addition to TWWHA.</p> <p>High (on scale high, medium, low) importance for improving the reservation status and connectivity for all three marsupial carnivore species.</p> <p>40-60%? relative contribution to reserving high and very high value freshwater ecosystems</p> <p>High social value.</p> <p>Low impediments to effective reserve management</p>

Polygon number	Area Description	IVG Report Recommendation
114	Great Western Tiers, Sth side of Quamby Bluff	<p>Quamby Bluff Forest Reserve + 114 + adjoining GWTCa + 121 + Warners and Archers Sugarloaf of WH significance (habitat connectivity back to GWT, "satellite" facsimile of the GWT).</p> <p>50-80% of eucalypt forest with potential contribution to representativeness based on relative biological productivity.</p> <p>Paleoendemic Flora -refugia, <i>Eucalyptus viminalis</i> wet forest (Endangered), <i>Eucalyptus Ovata</i> forest and woodland (Endangered), Sphagnum peatland (Rare).</p> <p>Eucalypt diversity - Improve the reservation of Eucalypt species, some notable values with conservation gain through reservation.</p> <p>20-40%? of forest is RFA oldgrowth.</p> <p>High (on scale high, medium, low) importance for improving the reservation status and connectivity for all three marsupial carnivore species.</p> <p>60-80%? relative contribution to reserving high and very high value freshwater ecosystems</p> <p>High social value.</p> <p>Very low impediments to effective reserve management.</p>

Polygon number	Area Description	IVG Report Recommendation
115	Great Western Tiers, Jackeys Marsh escarpment and Warners and Archers Sugarloaf	<p>Of national and global significance, add to TWWHA along with adjoining parts of GWTCA (ecological diversity, regional connectivity, boundary benefits)</p> <p>Paleoendemic Flora -refugia, <i>Eucalyptus viminalis</i> wet forest (Endangered), <i>Eucalyptus Ovata</i> forest and woodland (Endangered).</p> <p>Eucalypt diversity - Improve the reservation of Eucalypt species, some notable values with conservation gain through reservation.</p> <p>Mid-range rating (high) for relative contribution of proposed reserve to improving the reservation status of known habitat for priority flora species.</p> <p>High (on scale high, medium, low) importance for improving the reservation status and connectivity for all three marsupial carnivore species.</p> <p>60-100%? relative contribution to reserving high and very high value freshwater ecosystems.</p> <p>Important for habitat connectivity (large carnivores).</p> <p>High social value.</p> <p>Very low impediments to effective reserve management.</p>
116	Great Western Tiers, Cluan Tier	<p>Paleoendemic Flora -refugia, <i>Eucalyptus viminalis</i> wet forest (Endangered).</p> <p>Eucalypt diversity - Improve the reservation of Eucalypt species, some notable values with conservation gain through reservation.</p> <p>High (on scale high, medium, low) importance for improving the reservation status and connectivity for all three marsupial carnivore species.</p>

Polygon number	Area Description	IVG Report Recommendation
120	Great Western Tiers, Cluan Tier	<p>Tasveg.2.0 Code NLM <i>Leptospermum lanigerum</i>-<i>Melaleuca squarrosa</i> swamp forest threatened vegetation community (LIST)</p> <p>Paleoendemic Flora - refugia, - Subalpine <i>Diplarrena latifolia</i> rushland.</p> <p>High (on scale high, medium, low) importance for improving the reservation status and connectivity for all three marsupial carnivore species.</p>
121	Great Western Tiers, NW side of Quamby	<p>Quamby Bluff Forest Reserve + 114 + adjoining GWTCa + 121 + Warners and Archers Sugarloaf a least of state significance and possibly of national significance (habitat connectivity back to GWT, "satellite" facsimile of the GWT)</p> <p>High (on scale high, medium, low) importance for improving the reservation status and connectivity for all three marsupial carnivore species.</p> <p>High social value.</p>

Polygon number	Area Description	IVG Report Recommendation
125	Great Western Tiers, Caveside to Huntsman	<p>National and global significance, add to TWWHA along with adjoining parts of GWTCA, some boundary adjustment recommended.</p> <p>Mid-range rating (medium) for relative contribution of proposed reserve to improving the reservation status of known habitat for priority flora species.</p> <p>Flora conservation - <i>Monotoca submutica</i> var. <i>autumnalis</i>, <i>Persoonia muelleri</i> subsp. <i>angustifolia</i>, <i>Thismia rodwayi</i></p> <p>10-20% of forest is RFA oldgrowth.</p> <p>High (on scale high, medium, low) importance for improving the reservation status and connectivity for all three marsupial carnivore species.</p> <p>40-60%? relative contribution to reserving high and very high value freshwater ecosystems</p> <p>High social value (small exception around Meander River).</p> <p>Very low impediments to effective reserve management. "The collection of ENGO-proposed reserve lands, considered in conjunction with the adjoining Great Western Tiers Conservation Area, if added to the Tasmanian Wilderness World Heritage Area, would contribute to the integrity of the TWWHA and therefore have World Heritage significance and, hence, National Heritage significance."</p>
131	Great Western Tiers, very small parcel adjoins Croesus Cave section of MCKNP	<p>Probable addition to Mole Creek Karst National Park (MCKNP) but needs local decision making.</p> <p>Paleoendemic Flora -refugia, <i>Eucalyptus viminalis</i> wet forest (Endangered)</p>
133	Great Western Tiers, very small parcel adjoins Croesus Cave section of MCKNP	<p>probable addition to MCKNP but needs local decision making</p>

Polygon number	Area Description	IVG Report Recommendation
134	Great Western Tiers, very small parcel adjoins Croesus Cave section of MCKNP	probable addition to MCKNP but needs local decision making
135	Great Western Tiers, very small parcel adjoins Croesus Cave section of MCKNP	probable addition to MCKNP but needs local decision making
136	Great Western Tiers, Western Bluff	<p>High heritage conservation value, critically important surface catchment of Croesus and Lynds systems, also important for TWWHA integrity (karst, scenery, geoconservation), add whole parcel to MCKNP then add NP to TWWHA</p> <p>Include in the TWWHA for World Heritage nomination purposes, part of the Mersey River Forest Reserve and adjoining informal reserve east of the Mersey River (the river becomes the World Heritage boundary).</p> <p>Paleoendemic Flora -refugia, <i>Eucalyptus viminalis</i> wet forest (E) <i>Eucalyptus amygdalina</i> forest and woodland on sandstone (V), Riparian scrub (V).</p> <p>50-80% of euc forest with potential contribution to representativeness based on relative biological productivity.</p> <p>Medium (on scale high, medium, low) importance for improving the reservation status and connectivity for all three marsupial carnivore species.</p> <p>Eucalypt diversity - Improve the reservation of Eucalypt species, some notable values with conservation gain through reservation.</p> <p>60-100%? relative contribution to reserving high and very high value freshwater ecosystems</p> <p>Low impediments to effective reserve management.</p>

Polygon number	Area Description	IVG Report Recommendation
139	Great Western Tiers, small parcel near Western Bluff	not assessed?
141	Great Western Tiers, King Solomons area	<p>High heritage conservation value, critical to protection of Kubla Khan, threatened <i>Eucalyptus amygdalina</i> forest and woodland on sandstone, add 141 and 136 to MCKNP and add 141, 136, King Solomons and Kubla Khan blocks of MCKNP to TWWHA.</p> <p>Paleoendemic Flora -refugia, <i>Eucalyptus amygdalina</i> forest and woodland on sandstone (V).</p> <p>Eucalypt diversity - Improve the reservation of Eucalypt species, some notable values with conservation gain through reservation.</p> <p>High (on scale high, medium, low) importance for improving the reservation status and connectivity for all three marsupial carnivore species.</p>
142	Great Western Tiers, Dogs Head Hill/Union Cave	<p>High heritage conservation value, important buffer to Dogs Head Hill/Union Cave system, threatened <i>Eucalyptus amygdalina</i> forest and woodland on sandstone, add to Dogs Head Hill Forest Reserve, consider adding FR to MCKNP.</p> <p>Paleoendemic Flora -refugia, <i>Eucalyptus amygdalina</i> forest and woodland on sandstone (V).</p> <p>Eucalypt diversity - Improve the reservation of Eucalypt species, some notable values with conservation gain through reservation.</p> <p>High (on scale high, medium, low) importance for improving the reservation status and connectivity for all three marsupial carnivore species.</p>

^a Paleoendemic refers to a species that once had a widespread distribution, but now is restricted to a particular area

^b oldgrowth forest as defined in the Tasmanian Regional Forest Agreement