

Western Creek Spurge laurel (*Daphne laureola*) Report 2

30th March 2026

Laurie Goldsworthy

Contents

Aim:	2
Background:	2
History of Spurge laurel control measures at Western Creek and records of plant development and location:	2
Mid 2023 to Early 2025	2
September 2025 to March 2026	4
Curwen Quarry	4
Future Work Spurge laurel.....	9
Further Surveying required beyond the main outbreak control area.....	9
Further surveying and control required in the main outbreak control area.....	9
Spurge laurel images	9
Hollies.....	14
Future work Hollies	15
Holly Images.....	17
Overall Zoning.....	22
Record of work in Spring Summer 2025/26 including Wildcare Grant.....	23

Aim:

To eradicate the Spurge laurel (*Daphne laureola*) outbreak at Western Creek.

Background:

Spurge laurel is a recently emergent weed at Western Creek which can potentially be eradicated before it spreads further and becomes widely established. It has the potential to invade native forest and dominate the understory. All parts of the plant are toxic. The Western Creek outbreak is about 1 km from the Tasmanian Wilderness World Heritage (TWWHA) boundary and so has received welcome attention from Tasmanian Parks and Wildlife Service and Biosecurity Tasmania. Wildcare Tasmania has provided grant funding through the Tasmanian Nature Conservation Fund.

Spurge laurel has been identified as an emerging priority weed under the Tasmanian Weed Action Fund Stage 3 Project 6.

Other known outbreaks occur at Lorinna, Fern Tree and Collinsvale. They are all being actively managed.

History of Spurge laurel control measures at Western Creek and records of plant development and location:

Mid 2023 to Early 2025

Small plants of Spurge laurel were first identified on a private property (Goldsworthy/Nicklason) at Western Creek in mid-2023. By late 2023 large outbreaks of well-established bushes were found on two adjoining properties (Curwen and Atkins, see Figure 2). The clump of Spurge laurel in Figure 1 was the largest clump in the centre of the main outbreak (primary cluster, Curwens). This outbreak extended over an area of about 5ha of semi open *E. obliqua* forest in good condition on fertile soils with a variety of understory native plants. As well as the central clump this area had perhaps 100 plants of varying sizes from well-established bushes to young plants. We removed all found plants between late December 2023 and May 2024 but unfortunately most of the fruit had set seed and fallen or been eaten by wildlife by the time this outbreak was discovered in late December 2023. Any remaining fruit was bagged.

The full known extent of the outbreak in the Atkins block covers about 27 ha, to the west of the Curwen block on the western side of the Western Creek. Much of this area is degraded *E. amygdalina* forest with *Pinus radiata*, many Hollies (*Ilex aquifolium*) large and small as well as large expanses of blackberries. From this area, between late December 2023 and May 2024, we removed a further approximately 50 plants of varying sizes from well-established bushes to young plants, some of which had set seed. The Spurge laurel doesn't tend to occur amongst the thickest blackberry areas, more on the margins or in areas of semi open forest in reasonable condition, however some well-established bushes were found amongst significant blackberry cover, with evidence of layering.



Figure 1 Central clump, E. obliqua forest on fertile soils. Most berries had ripened and fallen or were eaten by the end of December 2023

Lat, Lon -41.6395, 146.5081, 340m ASL

Further surveying in September/October 2024 found numerous missed plants over the whole area previously treated including a further cluster of established plants (secondary cluster) along a small side stream in the south west corner of the Atkins block (Blue Drain). (See Figures 2 and 3, yellow markers for placemark recordings) All found plants were removed and any branches with ripening berries cut off and bagged. From this time on, survey tracks and removed plants were recorded on Avenza Maps on an Android mobile phone including photos.

Surveying continued to end of March 2025 (See Figure 5 for track recordings) then resumed in September 2025. Grant money was used to pay for an extended survey beyond the main control area. This search revealed an isolated plant well to the east. A local resident found another isolated plant on a small island in the Western Creek well to the south. (see Figure 3)

The work to February 2025 is detailed in a previous report: *Western Creek Spurge laurel report Feb 2025 FoGWTkn.pdf*

September 2025 to March 2026

Surveying resumed from mid-September 2025. Numerous plants were found on all three blocks including isolated new seedlings, clumps of seedlings obviously springing from where a bush had dropped many fruit, and established plants including plants with flowers and green fruit. A total of 275 placemark recordings of Spurge laurel plants or groups of plants were made in this time period, many with photos. (See Figure 2, red markers for placemark recordings and Figure 4 for track recordings)

The search area was extended to the north on the Atkins block as far as Cheshunt Road. In this new area a couple of isolated plants bearing green berries were found close to each other well to the north of any previous finds. These plants are now the most northerly plants of the known range of the Western Creek outbreak. Further, a clump of three well established bushes bearing fruit was found close to the Western Creek in this northern search area. These locations will need to be returned to regularly in case seed was set in the previous season.

The search area on the Curwen block was also extended to Cheshunt Road. The only plants found in this extended search were small ones close to the area on the Curwen block previously searched.

In April 2025 we were awarded a grant of \$12,100 from Wildcare's Tasmanian Nature Conservation Fund to search for Spurge laurel on the Atkins block while removing Hollies and treating Spanish heath. Hollies and Spurge laurel have ripe fruit at the same time so there is the possibility that the Hollies would attract birds which then move on to the Spurge laurel fruit. Holly is a declared weed and has invaded parts of the TWWHA. For various reasons three different contractors were employed totalling about 11 person days' work at various times to late March 2026. The contractors were assisted by volunteers for each of those days. Dealing with the large Hollies, often in thick copses with a tangle of blackberries, was very difficult work. After 7 days' volunteer assisted contractor work with the contractor using a chainsaw, and an additional volunteer only day with a chainsaw, virtually all large Hollies had been dealt with. The remaining 4 days mainly involved treatment of dense stands of saplings. The Holly work is described in more detail in a subsequent section of this report.

Numerous Spurge laurel plants were found during the Holly work, the most being near the Blue Drain on the Atkins block. The Blue drain is a permanent stream flowing through the southwest corner of the Atkins block. These plants that were found while treating the Hollies were in addition to plants found in the same area while surveying a few weeks prior to the Holly work. This demonstrates the need for careful and repeated searching to locate all Spurge laurel plants.

Interestingly a number of Spurge laurel seedlings and young plants were found on bare ground underneath two Cotoneaster bushes 50m apart in the Goldsworthy/Nicklason garden in early December 2025 even though the Cotoneasters do not bear fruit at the same time as the Spurge laurel. The reason why Spurge laurel occurred there is unknown. (These Cotoneasters have now been removed.)

Recorded Spurge laurel plants to January 2026 are shown in Figure 2. A wider view showing two distant outliers is given in Figure 3. All tracks recorded while searching for Spurge laurel plants from September 2025 to January 2026 are shown in Figure 4. Tracks recorded while searching for Spurge laurel from the start of track recording in 2024 through to end of March 2025 are shown in Figure 5.

Curwen Quarry

At the beginning of October 2025 it was discovered that significant groundworks and forest clearing associated with the quarry on the Curwen block had occurred, close to the location of the central Spurge laurel clump shown in Figure 1, in preparation for extended operations in the quarry. Apparently the quarry contractors were unaware of the presence of Spurge laurel. Certain aspects of the operations led to concern that Spurge laurel seed may be spread well beyond the control area.

After intervention by Biosecurity Tasmania work was halted until a revised management plan was put in place. The concern that seed may have escaped remains.

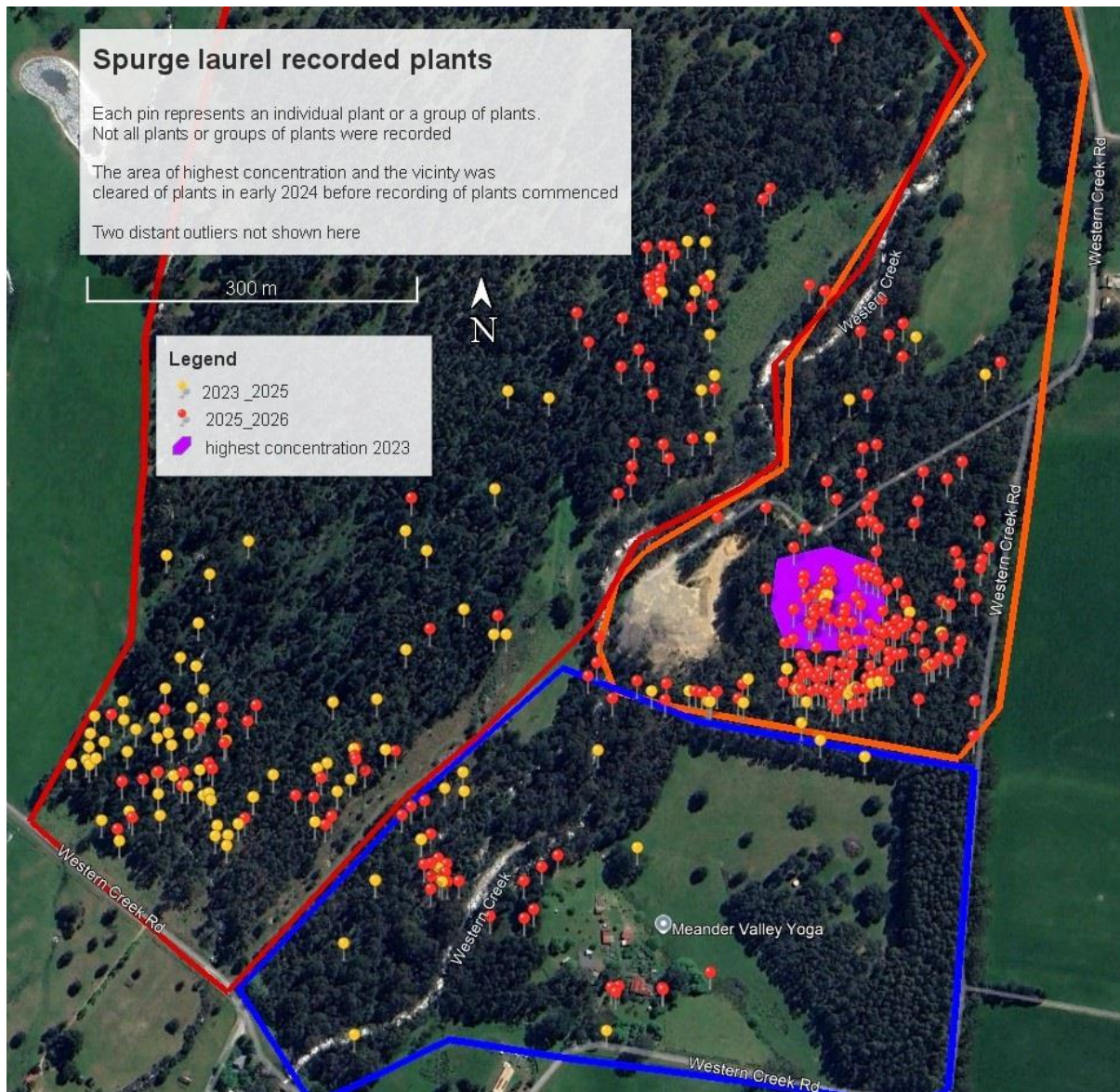


Figure 2 Recorded Spurge laurel plants and groups of plants at Western Creek to January 2026. Some markers represent groups of plants and in some cases multiple seedlings. Recording began in September 2024, by which time many plants had been removed. Not all plants were recorded. Two distant outliers are not shown here.

A total of 274 placemark recordings were made in 2025/26, either of individual Spurge laurel plants or groups of plants. Similarly a total of 124 placemark recordings were made in 2023/25, but only some of the total number of plants or groups of plants were recorded in this earlier time period. All found plants were removed.

The purple shaded area indicates the main central clump of Spurge laurel discovered late 2023.

The area outlined in orange is the Curwen block. The area outlined in red is the Atkins block. The area outlined in blue is the Goldsworthy/Nicklason block.

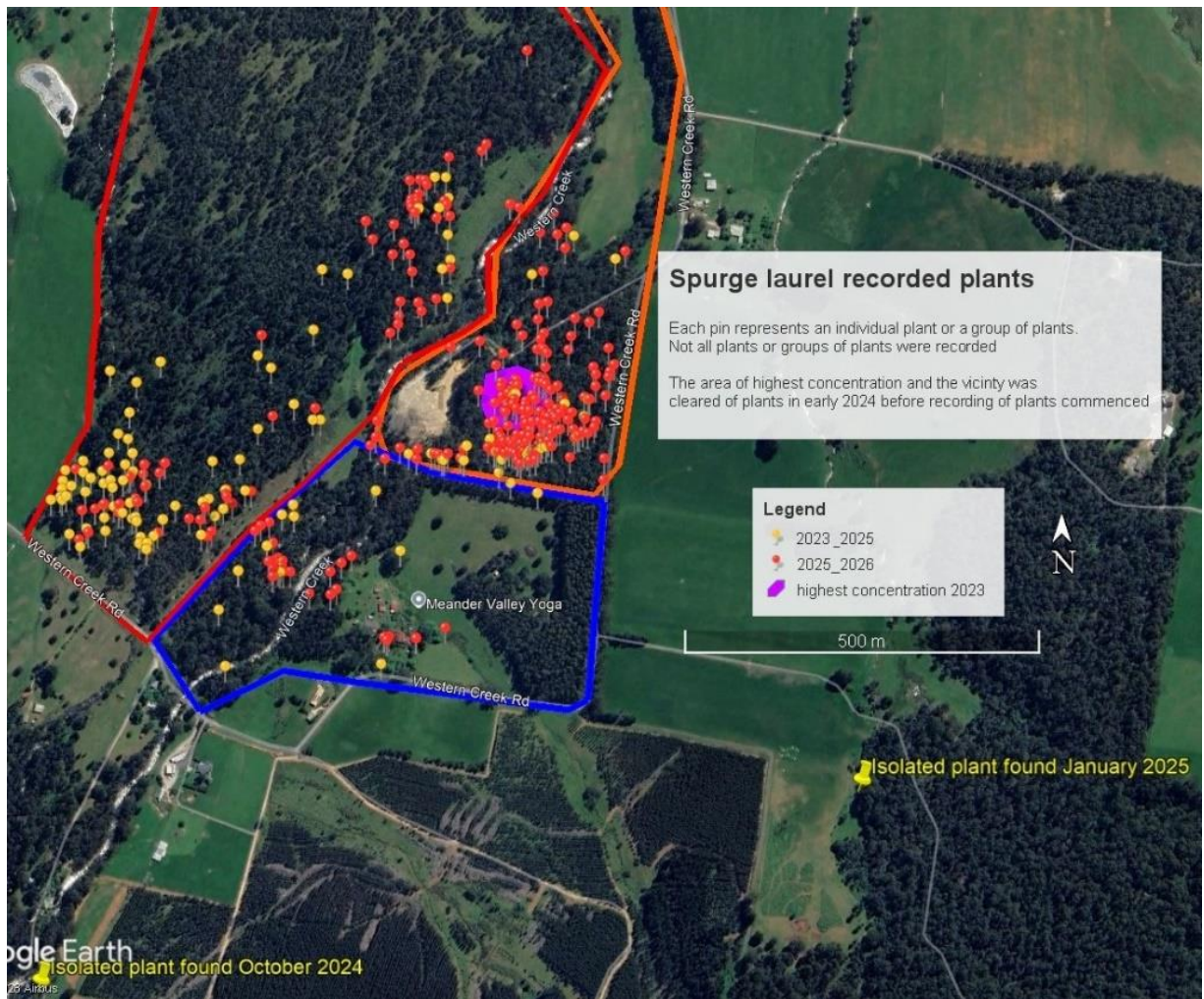


Figure 3 Wide view of recorded Spurge laurel plants and groups of plants at Western Creek to January 2026. Showing two outliers found in October 2024 and January 2025

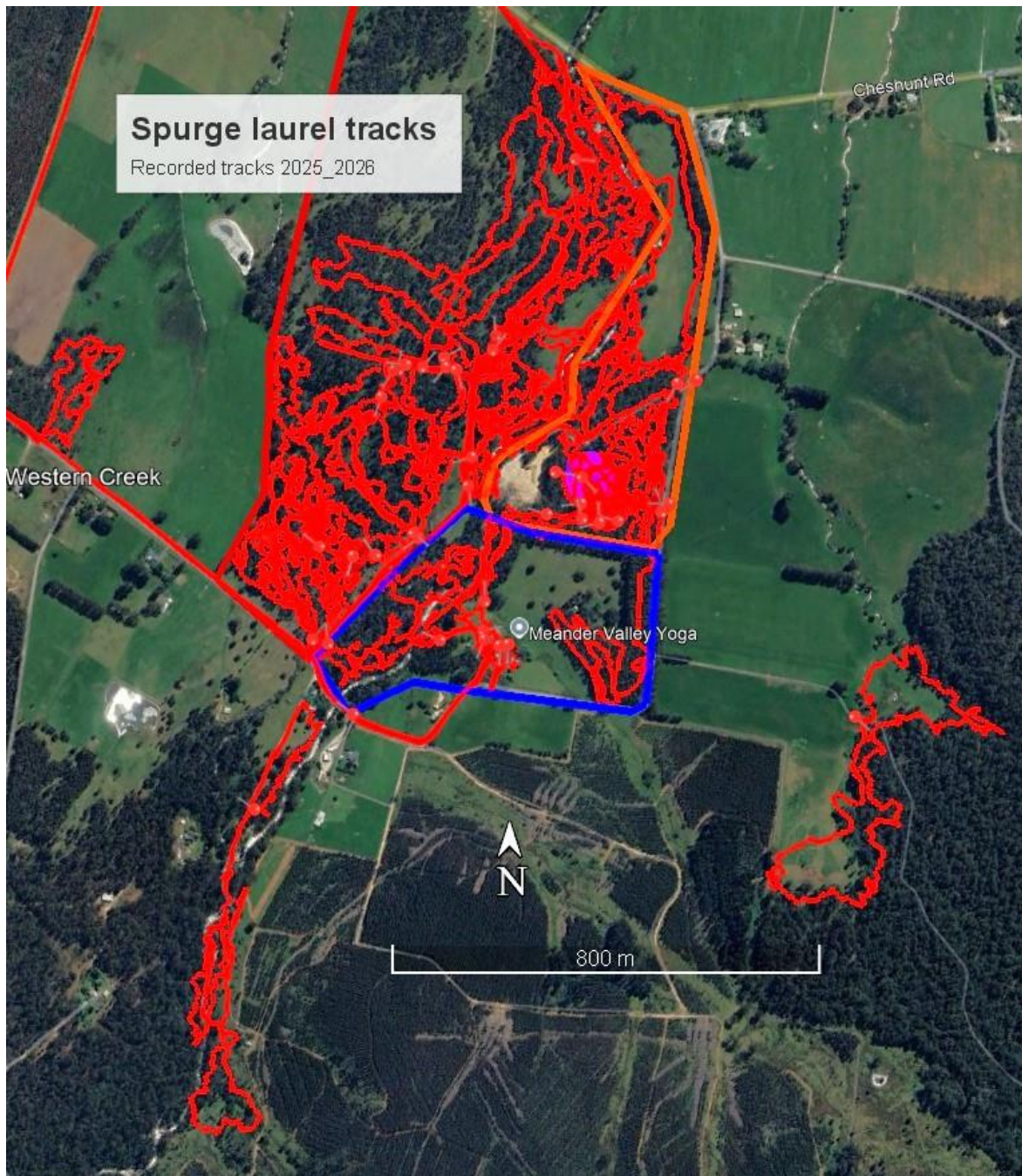


Figure 4 Tracks recorded while searching for Spurge laurel at Western Creek from September 2025 to January 2026. Most tracks were recorded.

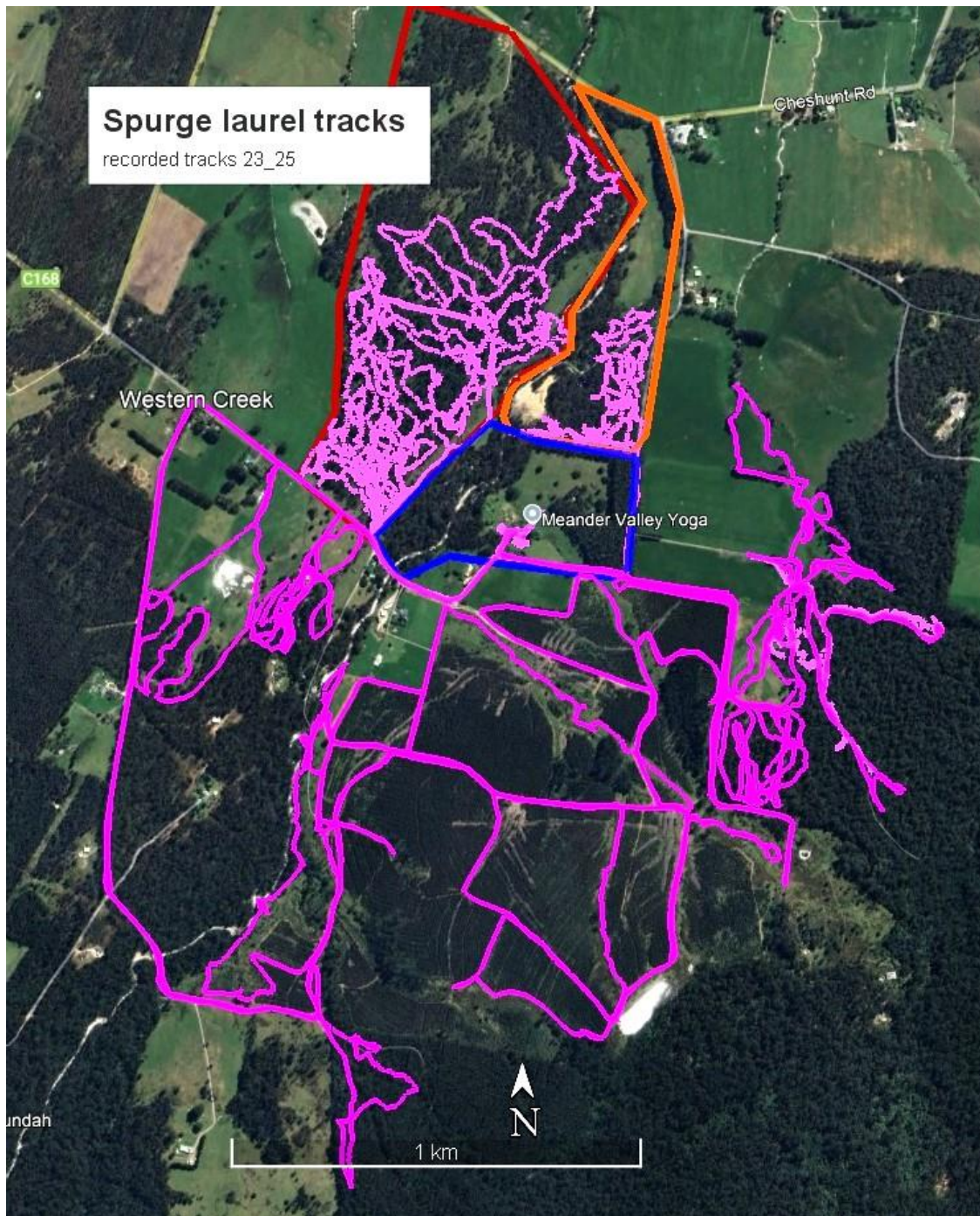


Figure 5 Tracks recorded while searching for Spurge laurel at Western Creek from start of recording in 2024 to March 2025. Not all tracks were recorded. Few were recorded on the Goldsworthy/Nicklason block (blue outline) although that area was extensively searched.

The numerous tracks shown outside the three main blocks (Curwen, Atkins, Goldsworthy/Nicklason) show the ground covered by Island Regen in January 2025. This work was funded by a grant from the Meander Valley Council and one from the John Robert Hunter 2A4 small grants scheme. A single outlier was found as a result of this search.

The area outlined in orange is the Curwen block. The area outlined in red is the Atkins block. The area outlined in blue is the Goldsworthy/Nicklason block.

Future Work Spurge laurel

Further Surveying required beyond the main outbreak control area

Figures 4 and 5 show limited surveying in a number of areas of interest to the south, west and east of the main control area. These are all private property.

The Forico plantation is the largest private block. It was surveyed in January 2025 but the ground wasn't covered in great detail. The local land manager for Forico has been given details of the weed and has asked his weed contractors to look out for it while dealing with other weeds. The amount of care taken is unknown.

Some other landowners have undertaken to look out for the weed, but the amount of care taken is unknown.

The areas north of the most northerly extent of areas searched are mostly developed farmland and so do not provide the semi open environment favoured by Spurge laurel.

Further surveying and control required in the main outbreak control area.

Spurge laurel at Western Creek has been actively controlled since late 2023, some 3 years, but established plants and seedlings have continued to be found up to March 2026. Ground stored seed may be viable for at least 5 years. In December 2025 one fruiting plant was found after its fruit had ripened and had either fallen or been eaten. All other fruiting plants found in Spring/Summer 2025 had been dealt with before the fruit had ripened.

If it could be assumed that all fruiting plants apart from this one known plant had been found and dealt with before fruit ripening in December 2025, then the main tasks remaining would be to follow up on ground stored seed from previous years as well as look for missed plants that may bear fruit in Spring/Summer 2026 or subsequent years. If only ground stored seed was involved, this surveying could be left for a few years because it would take some years for seedlings to start to bear fruit. However, the fact that plants have been missed in spite of careful surveying shows the possibility that there are still existing plants able to produce seed in Spring/Summer 2026 or later years.

Thus, the wise approach would be to survey the main outbreak control area in detail again in Spring 2026 and re-assess after that. To cover the main outbreak control area in detail would require perhaps 150 person hours. Given the shortage of volunteers this work should be supported by a paid contractor.

Spurge laurel images

A number of images of Spurge laurel plants found late 2025 follow:



Young Spurge laurel plants, probably
in second year of growth, Curwen
block 20/11/2025
Lat, Lon -41.6340, 146.5085, 350m
ASL



Young Spurge laurel seedlings,
probably in first year of growth,
Curwen block 20/11/2025

Lat, Lon -41.6402, 146.5082, 350m
ASL



Flowering Spurge laurel, Atkins block near Blue Drain, found while locating fruiting Hollies and demonstrating development of side shoots above and below ground level 3/10/2025
Lat, Lon -41.6404, 146.5009, 335m ASL





Spurge laurel with green berries,
Atkins block near Blue Drain, found
while treating Hollies 27/10/2025
Lat, Lon -41.6404, 146.5015, 335m ASL



Volunteers dealing with a Spurge laurel bush on Curwen block, location and details being recorded 24/10/2025
Lat, Lon -41.6382, 146.5085, 351m ASL

Hollies

The Hollies ranged in size from seedlings through saplings and small trees to large well-established copses. The copses consisted of a large central tree perhaps 10m high surrounded by younger trees, saplings and seedlings. Male copses spread through layering while female copses also spread by seeding. Suckering was also possibly involved. In treating the copses, stems of all sizes associated with the copses were treated.

The first stage of the work was to find and remove all specimens bearing fruit using petrol chainsaws. Where the fruit was thick, the branches with fruit were cut off and stockpiled, to contain the spread of seeds. At this stage the fruit on the trees was ripe fruit remaining from the previous season.

The Hollies were cut off within about 1cm of soil level and glyphosate applied to the cut stump immediately. Cutting at or near soil level probably reduces the risk of re sprouting by removing as many as possible sites from which sprouting may occur.

The second stage was to remove all remaining Hollies big enough to be suited to the use of petrol driven chainsaws, whether fruiting or not. At this stage a number of large male copses were amongst those removed.

The third stage was to remove the remaining smaller stems with loppers, battery chainsaw or battery pruning saw. Small seedlings were pulled.

As mentioned earlier, a number of Spurge laurel plants were found while working on the Hollies, even in areas which were surveyed earlier in the season.

Recorded Hollies are shown in Figure 6. Only a small portion of the Hollies were recorded due to the intensity of the work required to deal with the Hollies. The figure at least illustrates the extent of the Hollies. The green polygon in Figure 6 delineates an area of very densely spaced Holly saplings amongst blackberries.

In the early stages a contractor was accompanied by a volunteer. The contractor would work the chainsaw and the volunteer would apply the herbicide as well as assisting with clearing the cut stems. Cutting near soil level was hard on the chainsaw chains and frequent sharpening or occasional fitting of a replacement chain were necessary.

Cut branches were laid on top of blackberries wherever possible to minimise soil contact and thus minimise the risk of layering.

Over the last four days of contractor work, a volunteer or two worked in parallel with the contractor, separately cutting and painting. These last four days concentrated on the area of very dense holly regrowth amongst blackberries shown in Figure 6.

A total of 11 contractor person days and 120 volunteer person hours were expended for the Hollies (and Spanish heath). A total of about 200 volunteer person hours were expended for all the weed work on the three blocks: Spurge laurel, Hollies, Spanish Heath and Foxgloves.

It was observed that the female Hollies held ripe red fruit at least through to the end of December. Spurge Laurel produces and drops ripe fruit over December. The Hollies flowered in spring, with flowers and green fruit apparent by early November. Some Holly trees held ripe fruit from the previous season and green fruit simultaneously. Green fruit was apparent through December 2025 and were also seen in March 2025. The berries ripen over winter. Young Holly seedlings were apparent in mid November.

Future work Hollies:

There was not enough time left to cover the whole Holly area to remove all saplings and smaller plants. The next round of funded work would involve traversing the whole area in detail treating remaining Hollies while searching for Spurge laurel. It is possible that some of the large Holly trees

treated will produce new sprouts within a year or two from the cut stumps. Suckering is also a possibility. Thus, the Holly and Spurge laurel work could continue in parallel over a number of years.

The result of the current round of work is a massive reduction in the number of Holly plants as well as a massive reduction in the number of Holly seeds that would have been produced without this work being done. The same can be said for the Spurge laurel work.

It is likely that new Spanish heath plants will emerge from the areas sprayed, especially if there is soil disturbance by the landowners' cattle.

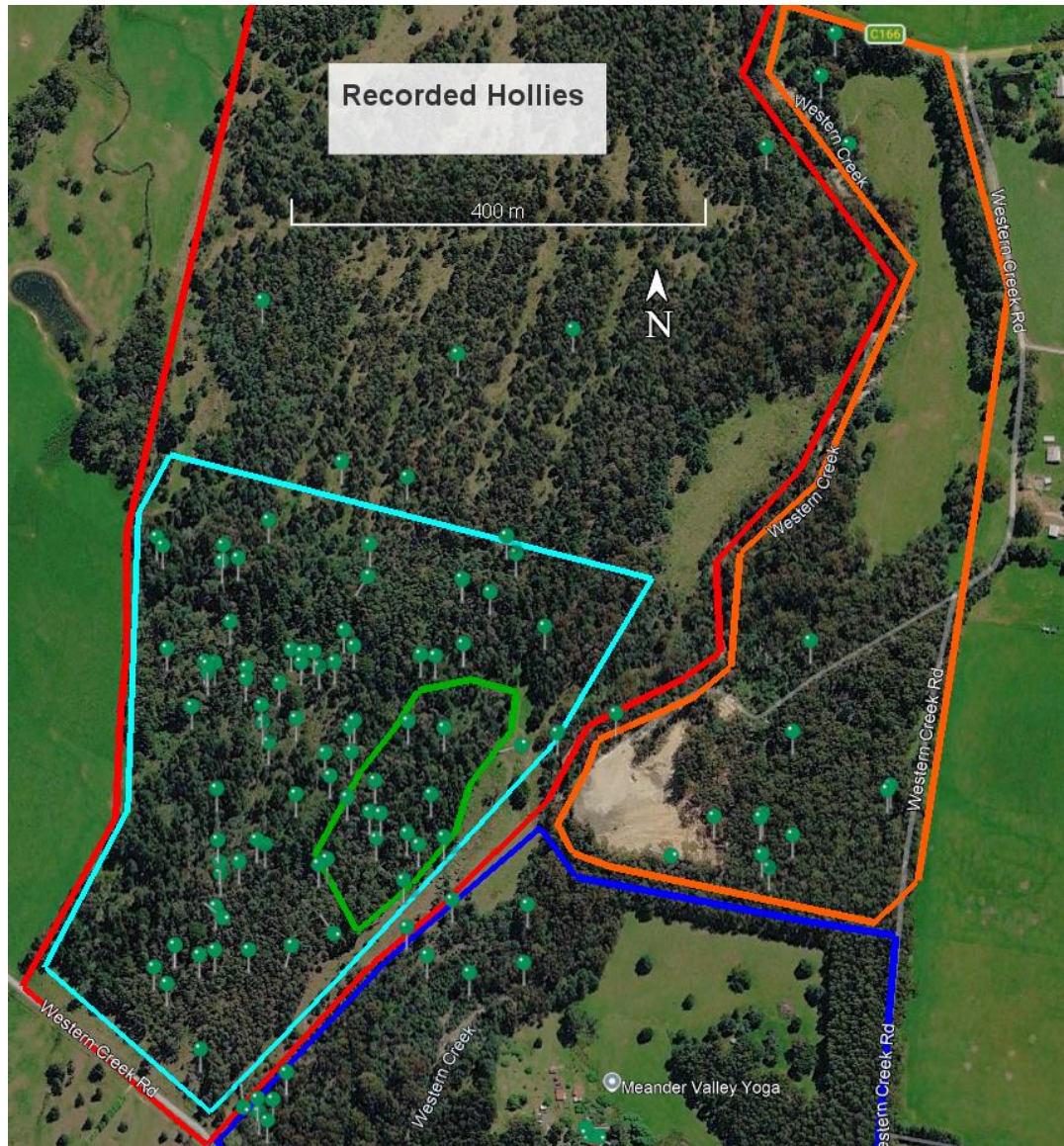


Figure 6 Recorded Hollies, illustrating the extent of the Hollies. The pale blue polygon represents the area (20 ha) where the vast majority of Hollies occurred and where the contractors worked (primary Holly control area). Only a small portion of the many Hollies in this area was recorded due to the large number and the intensity of the work. Outside this area, most Hollies were recorded and treated by volunteers.

The area outlined in green indicates an area of about 2 ha containing a high concentration of young Hollies, most of which were removed using loppers or small battery chainsaws.

The area outlined in orange is the Curwen block. The area outlined in red is the Atkins block. The area outlined in blue is the Goldsworthy/Nicklason block.

Holly Images

A number of images of Hollies treated in 2025/26 follow:

Large male copse in different stages of treatment 27/12/2025
Lat, Lon -41.6375, 146.5018, 340m ASL





Green berries 8/11/2025



Copious Green berries 19/12/2025



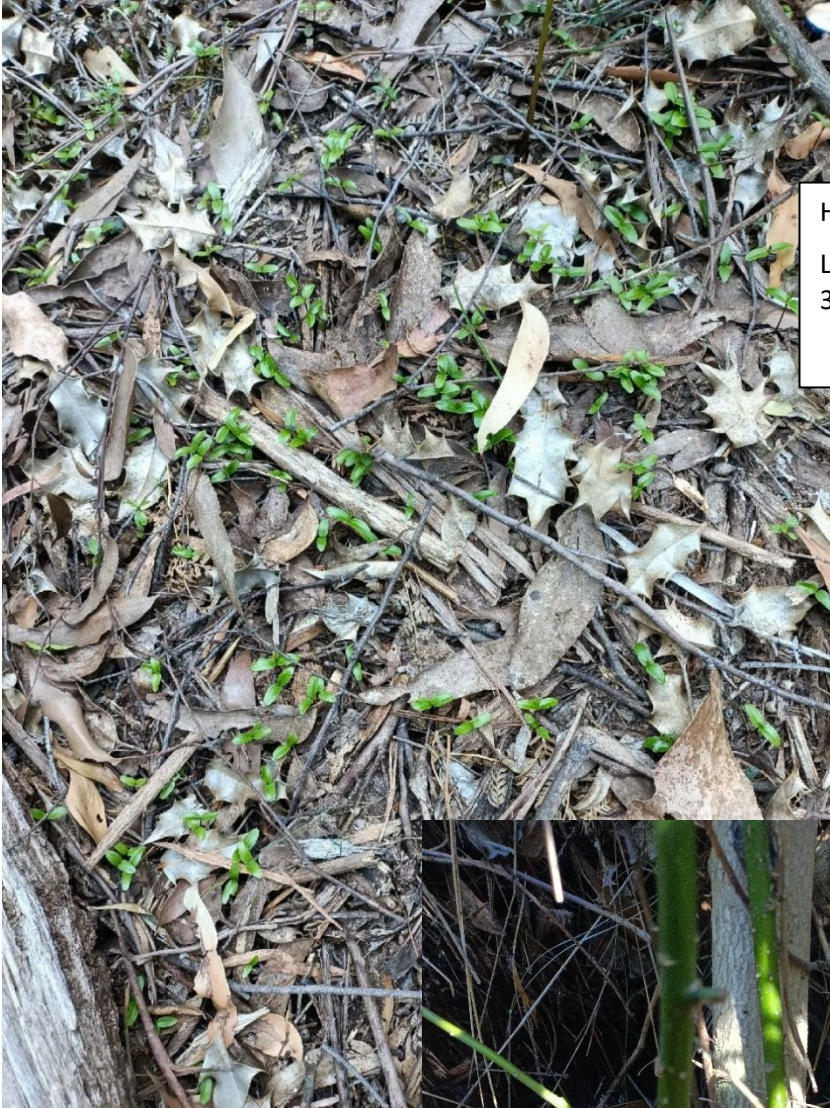
Female Holly in full flower 8/11/2025
Lat, Lon -41.6396, 146.5027, 330m ASL



Female Holly with red fruit
and flower buds, 4m tall
8/11/2025
Lat, Lon -41.6392, 146.5023,
335m ASL



Holly 3m with red fruit and young green fruit, doing the final cut at soil level
15/12/2025
Lat, Lon -41.6389, 146.5022, 334m ASL



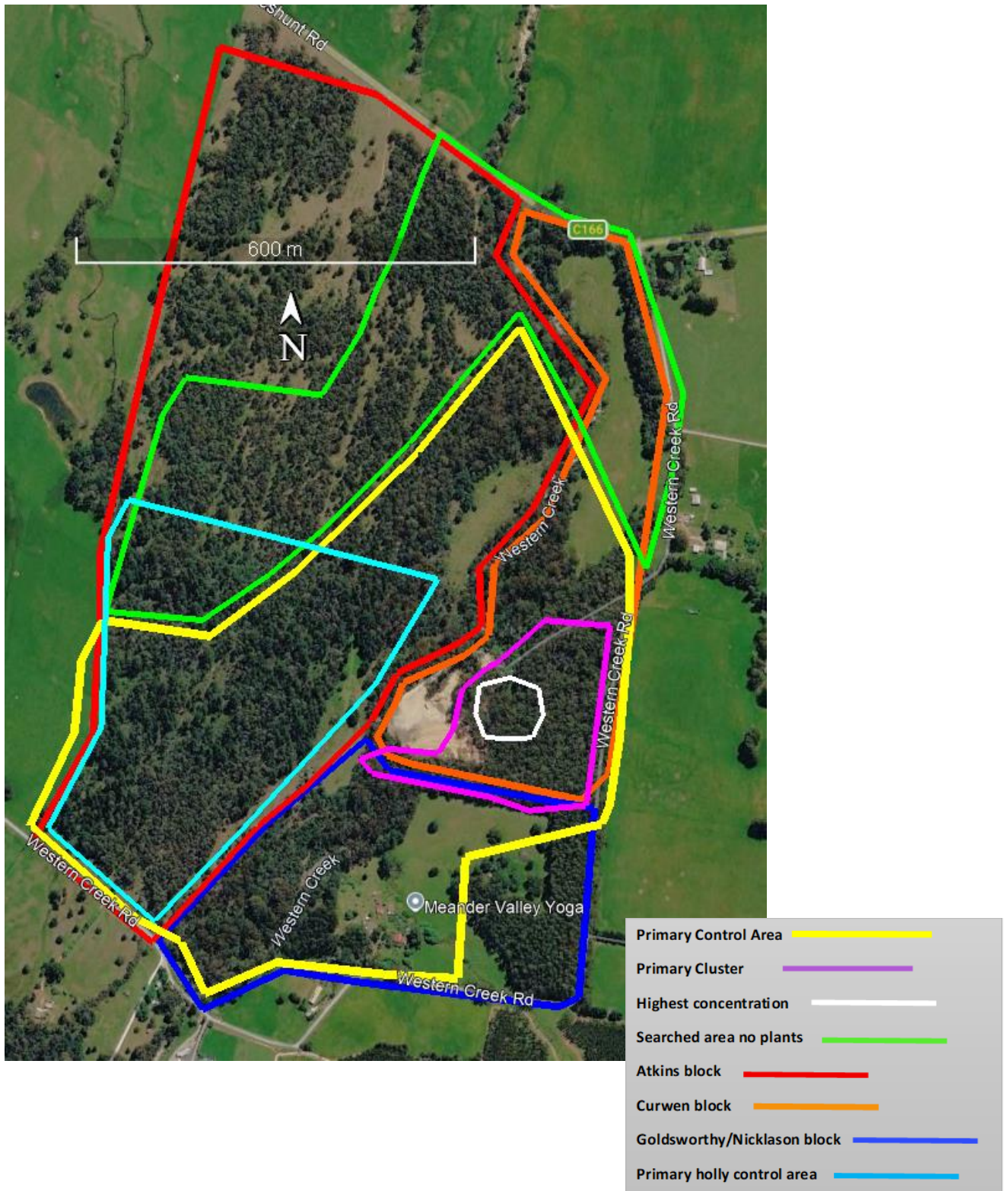
Holly seedlings 15/11/2024
Lat, Lon -41.6398, 146.5074,
357m ASL



Holly regrowth from old cut
stump 15/11/2024
Lat, Lon -41.640, 146.5039,
343m ASL

Overall Zoning

Figure 7 illustrates the location and extent of the known Spurge laurel outbreak and the areas searched as of March 2026.



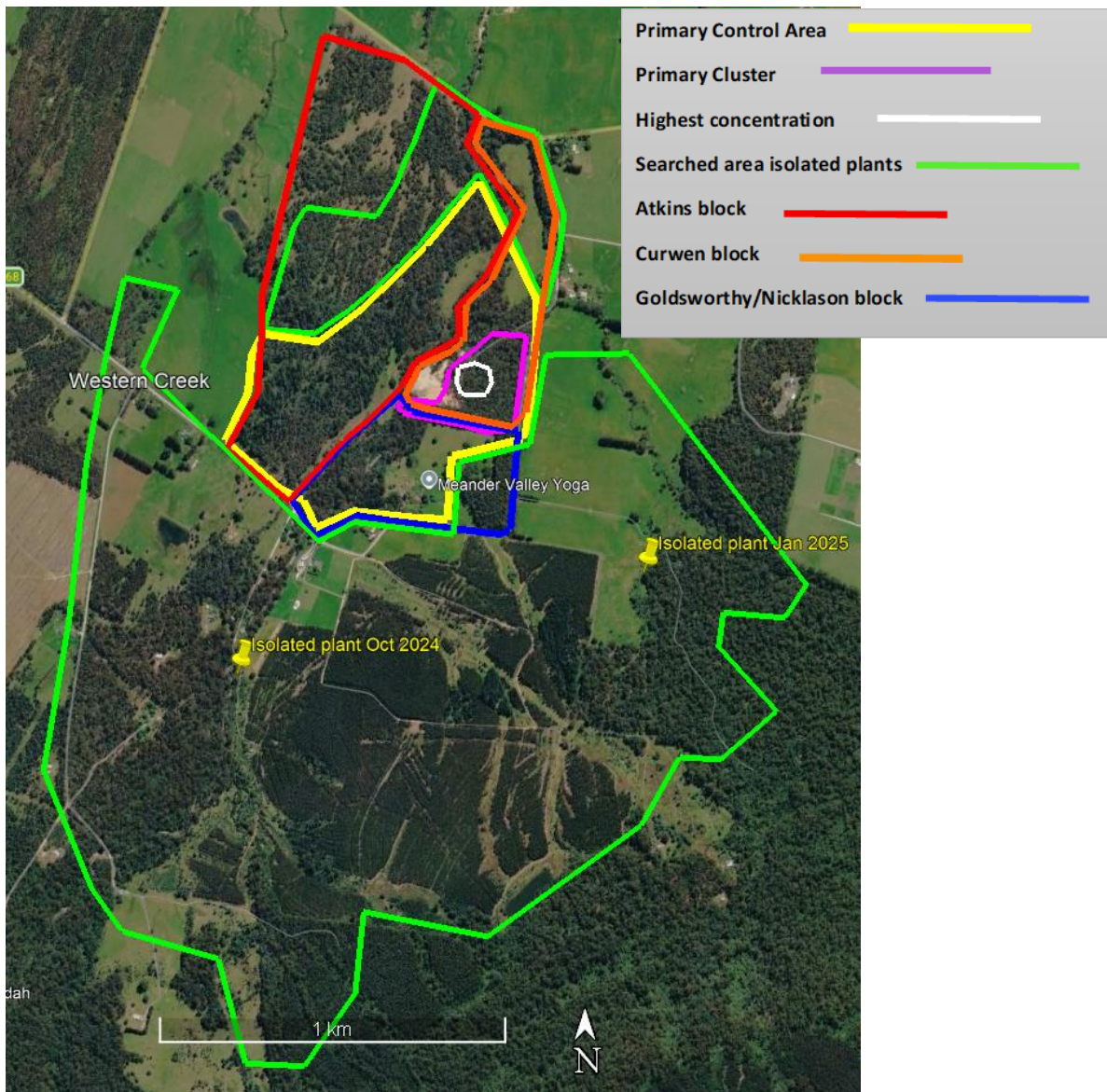


Figure 7 Spurge laurel activity areas Western Creek as at March 2026. Plants were found throughout the primary control area.

For Spurge laurel: Primary control area 50 ha; Primary cluster 5 ha; total searched area outside primary control area 294ha (270 ha larger southern area with 2 isolated plants, 24 ha smaller northern area with no plants found to date)

The large southern search area would best be covered again in more detail (and expanded) as it contains a lot of suitable habitat for Spurge laurel. It was mostly not searched in the Sept 2025 to March 2026 activity period.

The smaller northern search area could be expanded to cover the whole of the Atkins block.

Primary Holly Control Area 20 ha first treated Sept 2025 to March 2026

Atkins block 60 ha, Curwen block 16 ha, Goldsworthy/Nicklason block 17 ha. For all 3 blocks, the areas shown are the areas relevant to the Spurge laurel control, not the total amount of land owned.

Record of work in Spring Summer 2025/26 including Wildcare Grant

14/9/25, 21/9/25 Laurie 4 hours on Goldsworthy/Nicklason block

A number of Spurge laurel located and pulled including a large bush in fruit near northern boundary near creek and some hiding under Dogwoods

23/9/2025 Matt Rose and Laurie on Atkins Block, start 8.30am, finish 3.45pm

Matt's colleague away till late October so Matt and Laurie decided to do a day's work a week together until late October.

We visited all recorded locations (Laurie's records, Atkins) of spanish heath and either cut at soil level and painted with neat 500g/L glyphosate or sprayed with Garlon from a backpack. A large area of relatively fresh growth to the north of the east/west track was surveyed and the outer boundary sprayed with the backpack. Matt will bring his larger unit next week to treat this area thoroughly. All the spanish heath was in full flower with some flowers starting to brown off.

All known locations of holly in fruit (Laurie's records, along the east west track) were visited and the relevant hollies cut at soil level and painted with neat 500g/L glyphosate using a small squirt bottle, applied to the cambium. In most cases the ripe berries were not cut off and stockpiled but Laurie would like to re-visit and do this.

At all sites visited the immediate area was searched for Spurge laurel. At a number of sites, young plants were found, recorded and removed. Many had flowers and young green fruit.

29/9/2025 Laurie 3 hours

Entered Atkins from Cheshunt Rd, along northern part of track cut and painted gorse bushes and a multi stemmed broom, grubbed isolated Spanish heath and transported it to heath area further south

Cut and stockpiled berries off hollies treated on 23/9/25, further scouting to locate fruiting hollies south of east west track for Matt's next visit

1/10/2025 Laurie 3 hours

Located and pulled numerous Spurge laurel btwn junction of north south /east west tracks and Atkins creekside clearing – need to revisit and expand search area

3/10/2025 Laurie 4 hours

Traverse along Blue Drain full length both sides, located fruiting hollies and a number of Spurge laurel plants mainly in area of "secondary cluster". A few of these in fruit/flower.

4/10/2025 Laurie 2 hours

Scouting around edge of newly cleared area at quarry, examining and recording quarry activity and tracks

5/10/2025 Laurie 3 hours

Visited Curwen quarry site, found Spurge laurel plants at edge of newly cleared native forest (seedlings and fruiting), these not pulled yet, mapped quarry activities

6/10/2025 Matt Rose, Laurie and Will on site, start 8.30am, finish 3.30pm.

Matt finished spraying the northern outbreak of Spanish heath on Atkins, and an outlier near Western Creek Rd.

We treated a number of fruiting holly accessed from the east west track (Laurie's records) including a large female copse (before and after photos). A small hand sprayer with neat 500g/L glyphosate was

used, faster than the squirt bottle. Berries were cut off and stockpiled, trunks cut into sections and stacked.

Some mud on tracks, both vehicles washed down at 795 gravel carpark.

Need to revisit to check locations and locate possible missed female holly copse at 458558 5390220

10/10/2025 Laurie 3 hours

Scouting in the afternoon, mainly parallel to Blue drain tracks of 3/10/25, located numerous fruiting hollies, marked with gps and also red tape, a few Spurge laurel found in the semi open area bordering the open Poa grassland to the east.

11/10/25 Laurie 3 hours

Scouting mainly along edge of Poa grasslands on Atkins south of previous day (10/10/25), found a number of Spurge laurel, looked for site of "well established plants" but couldn't locate precisely, blackberries possibly too thick for seedlings to germinate?

12/10/2025 Laurie, Kristina, Deb Hunter and Andy 2 hours

Scouting on Curwens from our boundary parallel to Western Creek Road, a number of traverses, found scattered plants over most of the area and high concentrations of seedlings adjacent to Spurge laurel central, on edge of track, hand pulled hundreds of seedlings in the clumps, main clump marked with red tape.

Some fruiting hollies marked with red tape need attention immediately

14/10/2025 Laurie 2.5 hours

Returned to fruiting hollies on Curwens and removed them with chainsaw, stockpiled seed bearing branches. Further scouting east and south of Spurge laurel central, numerous plants found.

Contacted Jo asked her to look out for plants again.

15/10/2025 Laurie 2.5 hours

Scouting on Atkins north of ephemeral creek crossing, fruiting plants and seedlings found. Scouted further north along both sides of ephemeral stream, found fruiting plants 130m north of creek crossing, beside the stream.

Contacted Brendan at Forico, sent flyer to him, he will ask his weed contractors to look out for the weed.

16/10/2025 Laurie 1 hour

Scouting on our land southern end, none found

18/10/2025 Laurie 4 hours

Scouting on Atkins north from our boundary along streamside and also across to other side of Atkins clearing, found large established clump on the Western Creek side of the old paddock, marked with red tape

Scouting on western side of Atkins main paddocks alongside Sam's place. No Spurge laurel found.

20/10/2025 Laurie 2 hours

Scouting on our land, creek islands, none found

23/10/2025 Matt and Laurie 8.30 to 2.30, Neil 10 to 2.30

Chain-sawed numerous hollies that were previously marked with red tape by Laurie. Some Spurge laurel found including fruiting plants. Travelled north to established Spurge laurel clump discovered by Laurie previously on 18/10, 3 well established bushes, 2 smaller, all fruiting. Explored along

streamside and both sides of Atkins clearing, returned by further west route, discovered most northerly Spurge laurel plant so far, fruiting.

24/10/2025 Mt Roland Landcare 4 people (Greg, Kristen, Geoff and Janet) plus Laurie 2hrs

Scouting on Curwens below quarry road, 3 or 4 fruiting plants found, mostly just below newly gravelled road, also scouting along streamside vegetation to edge of paddocks. Weeded Curwens Foxglove patch near quarry gate.

27/10/2025 Matt, Gavin, Laurie, Neil 8.30am to 3.30pm

Removed perhaps 50+ hollies along both sides of Blue Drain, 2 chainsaws, Laurie and Neil applying Roundup with spray bottles, 4 or 5 fruiting Spurge laurel found. Gavin's chainsaw a bit small, sometimes he didn't cut low enough. This was the last day with Matt, he had too many other commitments. Matt said we had \$5000 left on the grant.

Engaged All Weed Solutions (Maurice) for 4+ days in 2 or 3 weeks' time, \$840 per day.

31/10/2025 Kristina, Andy and Laurie 2 hours

Scouting northern end of Atkins' around track near Western Creek, 2 plants found near previous outbreak at little creek crossing

1/11/2025 Laurie 2 hours

Scouting again at northern end of Atkins near creek, no Spurge laurel. Cut 2 small Hollies, pulled a patch of Spanish heath

Abt 102 volunteer hrs to date

6/11/2025 Laurie 5 ½ hours

Scouting on Curwens along streamside and edge of paddock, weeded Foxgloves near quarry gate, a few Spurge laurel near southern edge of paddock

8/11/2025 Laurie 2 hours

Scouting on Atkins for hollies, no Spurge laurel found

10/11/2025 Laurie 2 ¾ hours

Scouting on Atkins for Spurge laurel, no Spurge laurel, found Spanish heath

15/11/2025 Laurie 2 hours

Spraying Spanish heath found 10/11 most northerly patch on Atkins, 12 litres strong Glyphosate mix

About 114 volunteer hours to date

20/11/2025 Laurie 3 hours

Scouting on Curwens, cnr btwn 2 tracks and Spurge laurel central – many seedlings and small plants – further scouting in streamside vegetation to Cheshunt Rd, return via eastern edge of paddock, some Foxglove seedlings removed

24/11/2025 Laurie 3 hours

Scouting Curwen bush to east of paddocks (area where the outlier was found in January 2025), no Spurge laurel, plenty of Foxgloves

27/11/25 Laurie Meeting with Adam Muyt (Biosecurity Tas) and Stephanie Horwood (Enviro-Dynamics)

Potential funding from Weed Action Fund to help find Spurge laurel. Enviro-Dynamics is doing the statewide Spurge laurel project. Sent all my data and reports to Stephanie.

3/12/2025 Laurie 2 hours

Scouting above Spurge laurel central, found randomly sprayed weeds, called Chris Walters to discuss, no resolution.

7/12/2025 Laurie 1 ½ hours

Early Sunday morning trip to remove fruiting plants found previously in the quarry lease area (Laurie had left them in the hope of discussing the weeds with the quarry operators' weed person.) They had not been sprayed even though there had been spraying outside the quarry lease area. Some berries had turned purple but no sign that berries had dropped or been eaten (no bare stalks). Berries bagged.

8/12/2025 Laurie and Neil 2 hours after 6pm

Removed stakes and tapes from test plots at Spurge laurel central, pulled all seedlings from test plots and surrounds, found a single fruiting plant within 2 metres of original main clump, hidden by ferns, bagged.

15/12/2025 working with contractor (Robert from All Weed Solutions) on Atkins Laurie 4 hours, Neil 2.5 hours

Chainsawed and painted numerous hollies, between stream and east west track, many with numerous green berries, some with green and red berries. One large copse had male and female plants. Used Laurie's chainsaw, the one supplied by All Weed Solutions no good. Laurie assisted 8am to 12am, Neil 12am to 2.30pm. Contractor (Robert) hurt his knee early in the day, persisted until too painful, quitting at 2.30pm. All chainsawing from this day on used Laurie's saw.

16/12/2025 Laurie 3 hours

Laurie alone chainsawed and painted more hollies north and west of area reached with the contractor the previous day. Apart from one very large male copse, probably no more hollies to west.

23/12/2025 Laurie 2.5 hours

Spurge laurel search along both sides of Western Creek above Blue Drain and also Sandra's streamside vegetation, none found

24/12/2025 Laurie 3.5 hours

Laurie alone chainsawed and grubbed very large male holly copse with much layering, not finished

26/12/2025 Laurie 1 hour

Searching along Western Creek in Goldsworthy/Nicklason property, found some small Spurge laurel above creek, and one fruiting bush below cliff close to creek

29/12/2025 Laurie 4 hours

Laurie alone finished the very large holly copse that was started on 24/12/2025 then proceeded to the north east cutting numerous smaller hollies including 3m tree with red and many green berries

2/1/2026 Laurie and Brendan 5 hours

Laurie and Brendan (from All Weed Solutions) cutting hollies including smaller male copse and numerous saplings, possibly finished nearly all advanced hollies, mainly saplings and seedlings from now on. Needed to go to Deloraine to buy Glyphosate, used Laurie's chainsaw, one chain ruined on a rock.

To do as at 1/2/2026:

- a few smaller male hollies to north of east west track possibly not cut yet
- holly 5m no berries not cut? At 55 458682 5390184

- an extensive patch of holly saplings on Atkins not finished at 55 458694 5390248 in area arrived at on 29/12/2025, approx. in corner where east west track leaves north south track
- an extensive patch of holly saplings at 55 458705 5390114 approx due west of Goldsworthy northern boundary
- at least one larger holly south of Blue Drain on Atkins, missed by Matt and Gavin
- go over entire Atkins block treating young Hollies and any missed large ones

25/2/2026 Greg Taylor and Laurie 7 ½ hours

Greg Taylor as contractor and Laurie as volunteer clearing small Hollies (saplings and seedlings) from Atkins in the north east corner of the Holly extent. Found one Spurge laurel plant under big pines

From this point on, having treated most of the large hollies which required petrol driven chainsaws, Laurie and Neil as volunteers worked alongside the contractor and independently on smaller Hollies, doing the same work as the contractor rather than acting as contractor assistants.

26/2/2026 Greg Taylor, Laurie and Neil 8 hours

Greg Taylor as contractor and Laurie and Neil as volunteers clearing small Hollies (saplings and seedlings) from Atkins in the north east corner of the Holly extent, approx. due west of Goldsworthy northern boundary. Found another Spurge laurel plant under big pines. Very thick and numerous Holly growth, used loppers, small battery chainsaw and Stihl battery pruning saw. Applied neat 360 g/L (aqua) with spray bottle and dabbers. Evidence of regrowth and suckering from very old Holly stumps which were cut low to the ground and painted with glyphosate maybe up to 10 years earlier.

102 + 76 volunteer hrs to date

12/3/2026 Greg Taylor, Laurie and Neil 7.5 hours

Greg Taylor as contractor and Laurie and Neil as volunteers clearing small Hollies (mainly saplings and some seedlings) from Atkins in the north east corner of the Holly extent, approx. due west of Goldsworthy northern boundary. Found another Spurge laurel plant under big pines. Very thick and numerous Holly.

16/3/2026 Greg Taylor and Laurie 7 hours

Greg Taylor as contractor and Laurie as volunteer clearing small Hollies (mainly saplings and some seedlings) from Atkins in the north east corner of the Holly extent, approx. due west of Goldsworthy/Nicklason northern boundary. Found a number of Spurge laurel plants in one spot near a dense stand of Hollies. Very thick and numerous Holly.

Last day of contractor work for 2025/6 TNCF grant.

About 200 volunteer hours in total